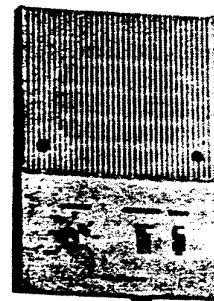
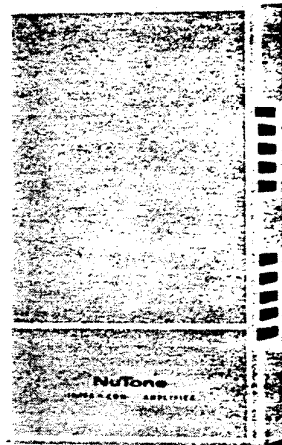
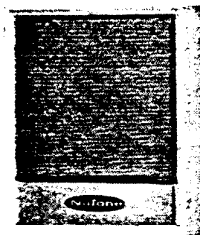


**DO NOT DISCARD - HOME OWNERS WARRANTY**

**OPERATING INSTRUCTIONS**

**NuTone MODEL 470**  
**"COMMU-NI-COM"**

**TRANSISTOR INTERCOM AND DOOR ANSWERING SYSTEM**



## **GENERAL DESCRIPTION OF YOUR NUTONE "COMMU-NI-COM" INTERCOM SYSTEM**

The amplifier unit is fully transistorized and mounts on the Surface. Each remote speaker is a control center for answering the door and for talking room-to-room. This system needs no "warm up" and is ready for use immediately. Also, the amount of current used is about equivalent to an electric clock, therefore it is recommended to be left on continuously. In this way, the system will always be ready for use. As transistors have much longer life than tubes, continuous operation will not seriously affect the life of the set.

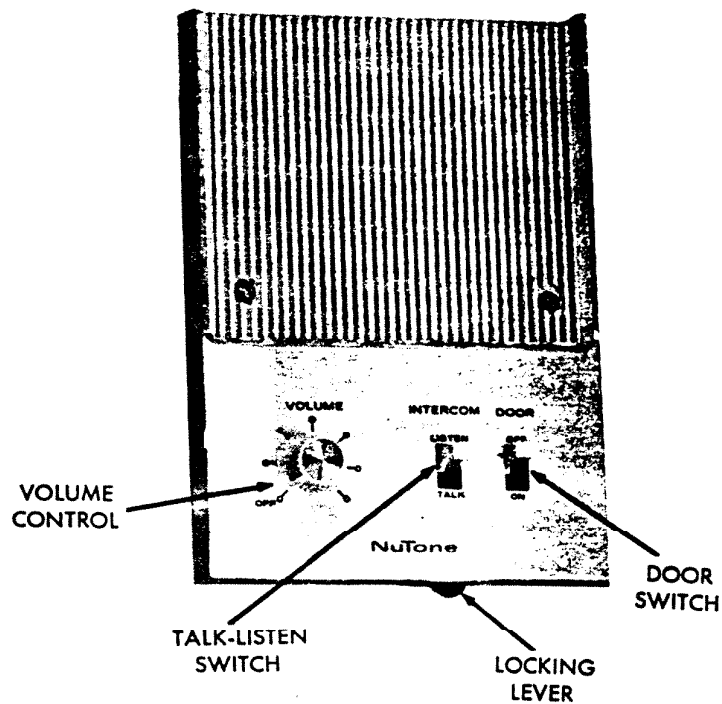
### **INSIDE REMOTE SPEAKER**

1. To control speaker at any remote — each room has its own individual control. Turn this volume control knob to right to increase volume or to the left to decrease volume.

NOTE: The volume control knob affects only *in-coming* volume to its own speaker. It does *not reduce outgoing* volume to other speakers. Outgoing volume is always maximum, even if volume control is turned full off. No sound will leave room until "Talk-Listen" switch is moved to "Talk."

### **HOW TO CARRY ON CONVERSATION BETWEEN INSIDE REMOTE SPEAKERS**

1. Turn volume control to maximum position
2. To talk, push "talk-listen" switch down (TALK POSITION) and hold while speaking. Release "Talk-listen" switch to receive answer.
3. The person in another room can answer by using the "talk-listen" switch as outlined in Step 2.
4. Adjust volume to normal listening level by turning volume control down. This does not reduce volume at the other remote speakers.



### **HOW TO MONITOR REMOTE SPEAKER**

1. Push "Talk-Listen" down (TALK POSITION) and hold. Slide locking lever (located directly below on bottom of panel) to the left, locking switch in (TALK POSITION). This makes this particular speaker a microphone, broadcasting whatever sounds are in the room over the entire system.

**CONTINUED** →

## TO ANSWER DOOR REMOTE

1. Push door switch (OFF-ON) down to ON and hold down while talking and answering.
2. To talk, push "Talk-Listen" switch down (TALK POSITION) and hold while speaking. When through speaking, release only the "TALK-LISTEN" switch to receive answer. Continue to hold door switch down, until all door communications are complete.
3. To conclude a conversation, release door switch. This turns off the door speaker.

### NUTONE WARRANTY

#### READ CAREFULLY — DO NOT DISCARD

This NUTONE COMMU-NI-COM-Intercom System has been designed for residential use only and has been carefully tested and inspected at the factory to insure against only material or workmanship defects.

NUTONE warrants all parts and labor (service) necessary to insure proper operation for a period of **ONE FULL YEAR (12 months) from the date of use.**

**Provisions governing application of this warranty are as follows:**

- The above warranty applies only if the unit is delivered or returned prepaid to an authorized **NUTONE Service Station.**
- This warranty is **void** in case of abuse, misuse, abnormal usage, faulty installation or repair by unauthorized persons. NUTONE'S liability does not cover consequential damage of the unit.

**NuTone**  
DIVISION

SCOVILL

Madison and Red Bank Rds.,  
Cincinnati, O. 45227

Rev. 1 - 11/70 Part No.45137