

NuTone

**Field Service
TECH TIP
NEWS**

RI-0009

TECH TIP NUMBER

04-27-01

DATE

IA-28 CHIME MODULE

PRODUCT

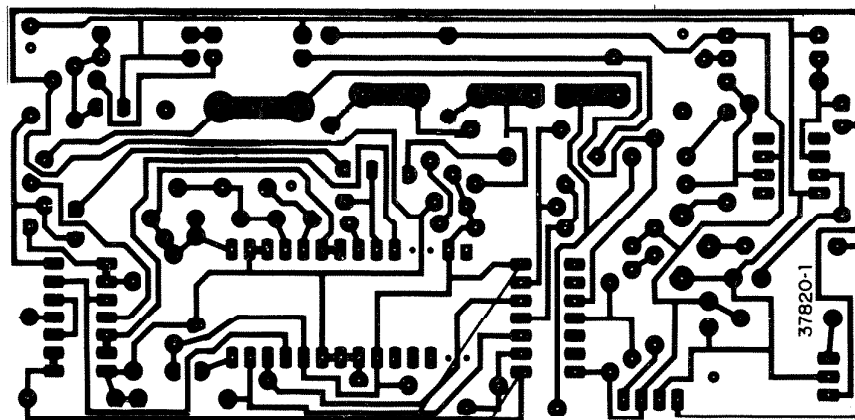
FALSE TRIGGERING

SUBJECT

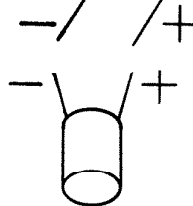
Occasionally false triggering due to transients may occur in Models IM-2003, IM-3003 and IM-3103 when using the IA-28 chime modules.

To correct this situation, install a 2.2 MFD electrolytic capacitor across pins 1 and 7. (Pin 7 is negative ground) on ICZ-3.

FOIL SIDE



2.2 mfd
10 VOLTS



**OBSERVE
POLARITY**

The chime module was modified to take care of this problem in 1996.