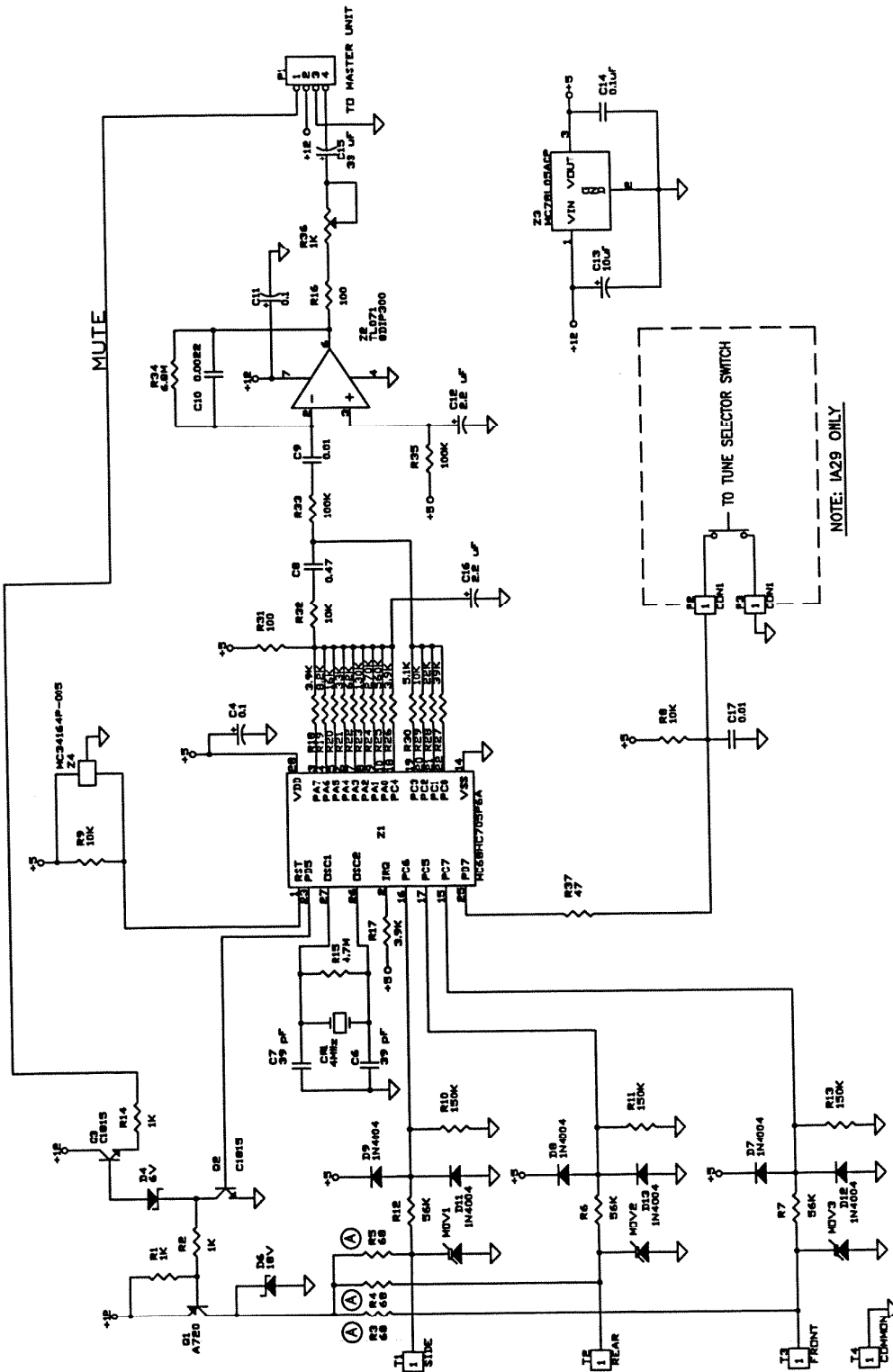
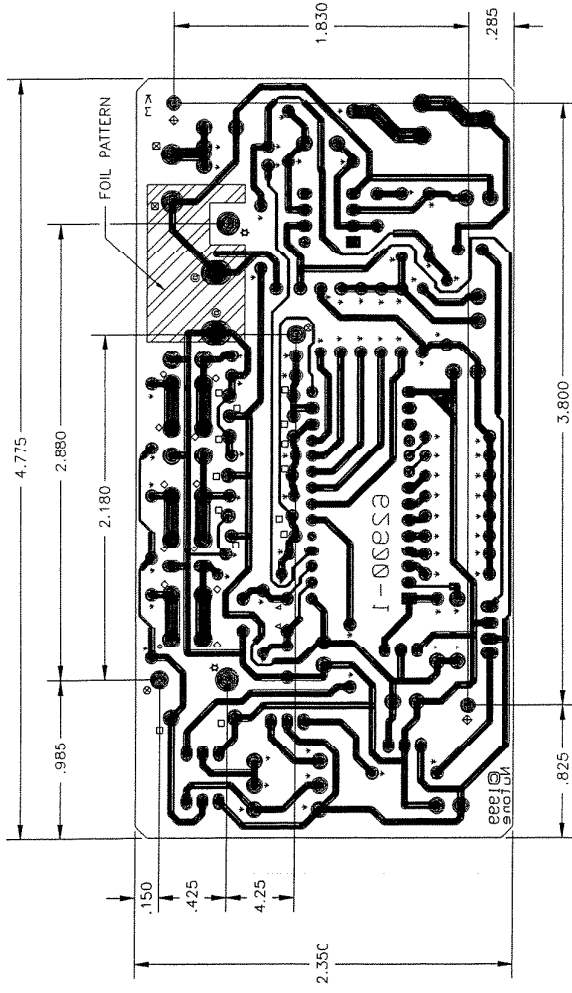


NEW CHIME MODULE
 SCHEMATIC
 IA28, IA29

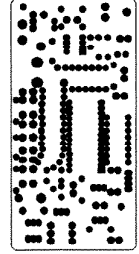




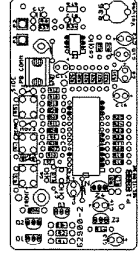
FOIL PATTERN
(SCALE 3:1)

HOLE CHART

SYMBOL	DIAMETER	QTY.	AUTO-INSERT
△	.045	2	AUTO-INSERT
□	.050	14	AUTO-INSERT
○	.035	2	
⊙	.050	2	
⊕	.100	2	
⊖	.125	2	A.I. REF. HOLES
⊗	.155	2	
*	.040	78	AUTO-INSERT
UNSPECIFIED	.040	50	



RESIST PATTERN

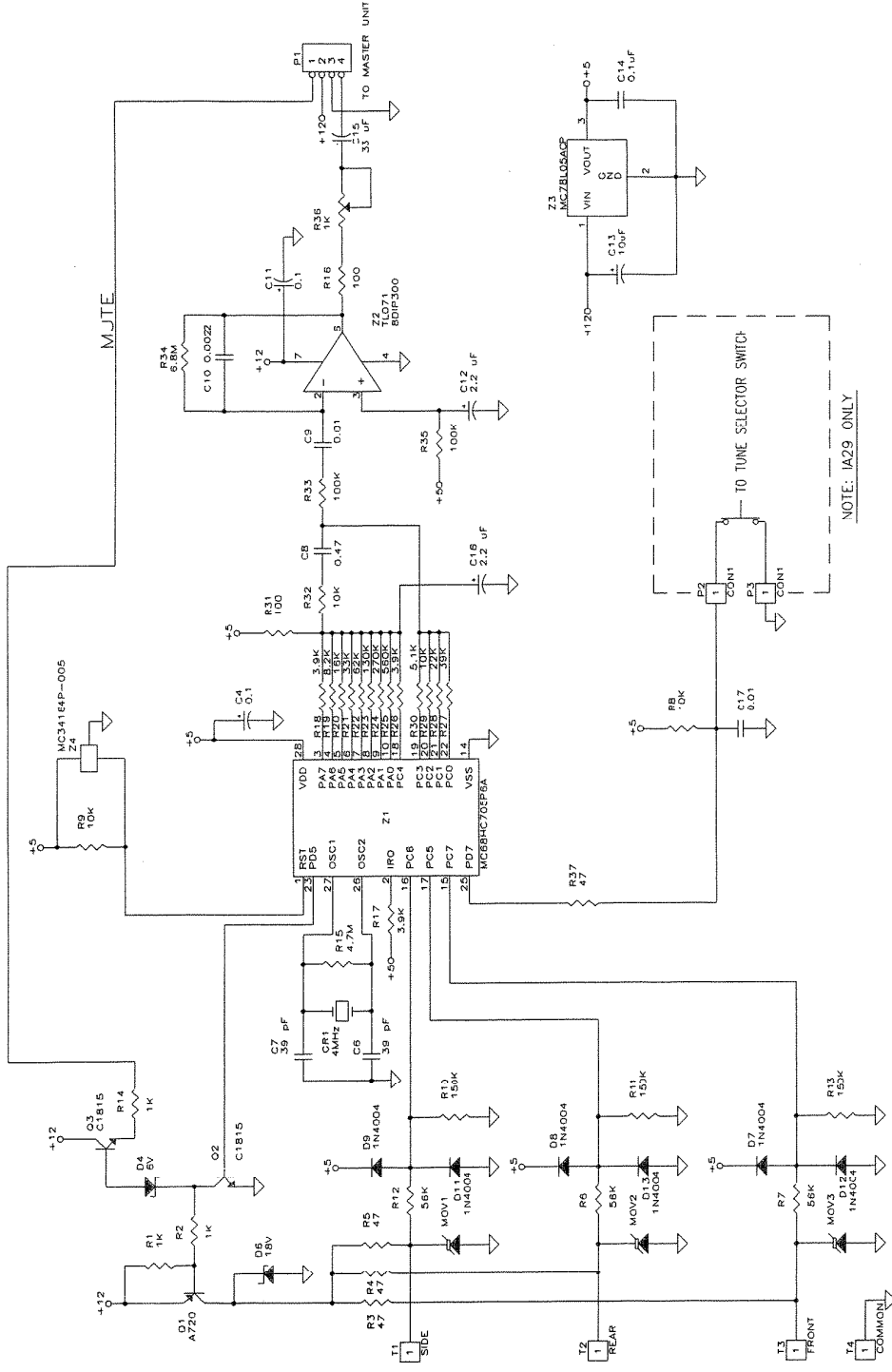


COMPONENT MARKING PATTERN

- NOTES:
1. MATERIAL: 1 OZ. COPPER CLAD ONE SIDE .082 THICK FR-2 OR NITONE ENGINEERING APPROVED EQUIVALENT MATERIAL.
 2. FINISH: SEAL BRIT.
 3. BOARD NOT TO EXCEED .075 INCH PER INCH OF LENGTH.
 4. BOND STRENGTH: 8 POUND PER INCH WIDTH MINIMUM.
 5. ALL HOLE PATTERNS SHOWN FROM THE COMPONENT SIDE OF THE BOARD.
 6. ARTWORK FURNISHED BY THE NITONE ENGINEERING DEPARTMENT:
 - a. FOIL PATTERN AND HOLE LAYOUT 62900-1
 - b. COMPONENT MARKING PATTERN 62900-2
 - c. RESIST PATTERN
 7. TOLERANCE FOR ALL HOLES PATTERNS TO BE ±.001 UNLESS OTHERWISE SPECIFIED.
 8. DIMENSION TOLERANCE ±.005 PLUS ±.001 FOR EVERY INCH OVER TWO INCHES.
 9. ALL HOLES TO HAVE ±.003 DIAMETER TOLERANCE UNLESS OTHERWISE SPECIFIED.
 10. BOARD WITH HOLE PATTERNS TO BE MARKED WITH DATE OF MANUFACTURE ON THE REVERSE SIDE OF THE BOARD.
 11. THE BOARD IS TO BE MARKED WITH U.L. 94V-0 RATING IN CONVENIENT AREA.
 12. BOARDS TO BE MARKED WITH DME OF MANUFACTURE.
 13. .100 DIA. (2) A.I. REF. HOLES (MARKED ⊕) MUST BE MADE DURING THE SAME OPERATION AS ALL HOLES MARKED ⊗.
 14. GERBER PCB FILES STORED ON 4/1TONE NETWORK NT-THREE/DEPARTMENT/ENG/PC BOARD FILES/A28 & W29

OLD ia-28

SCHEMATIC IA28, IA29



SCHEMATIC IA28, IA29