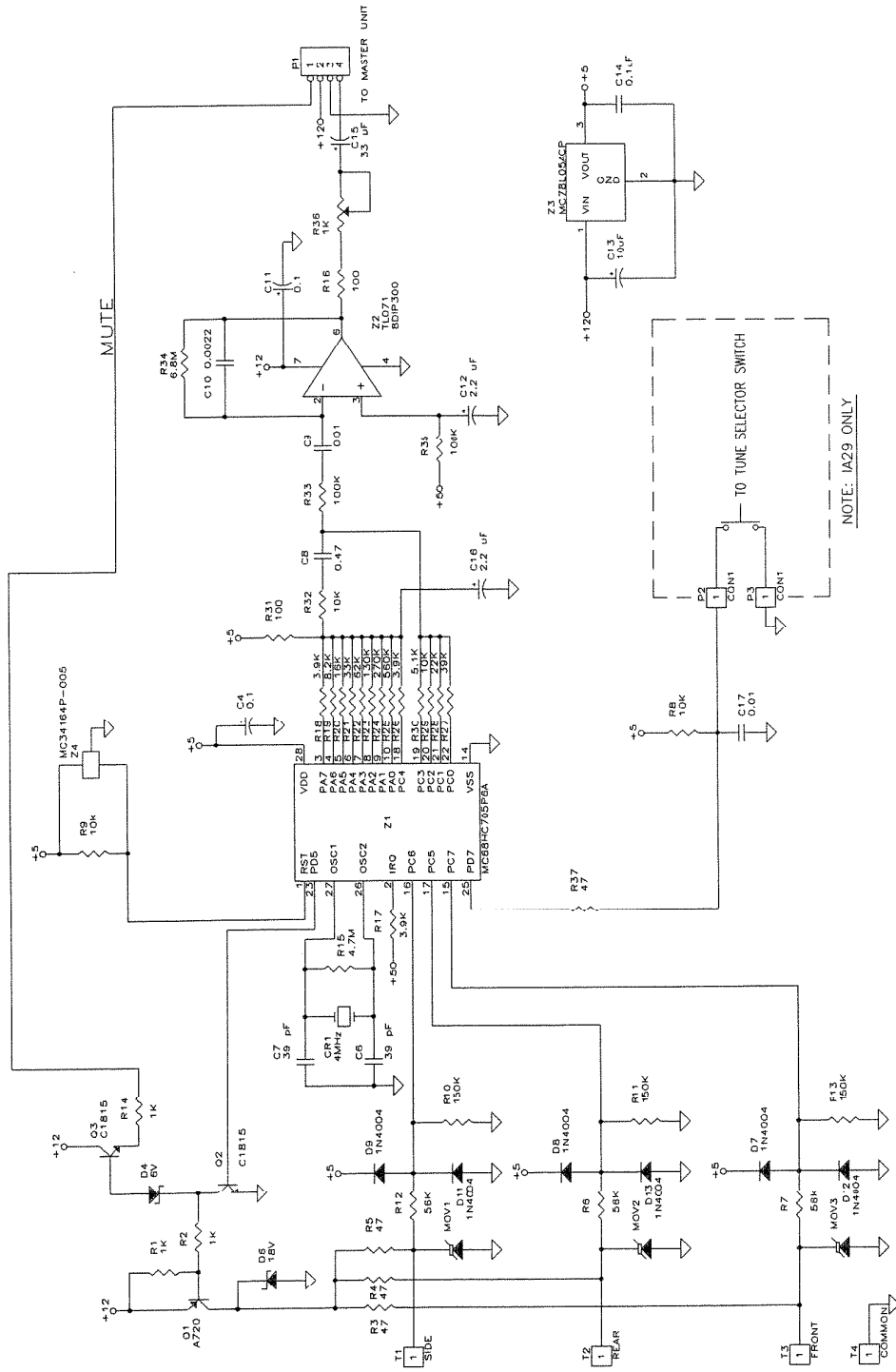
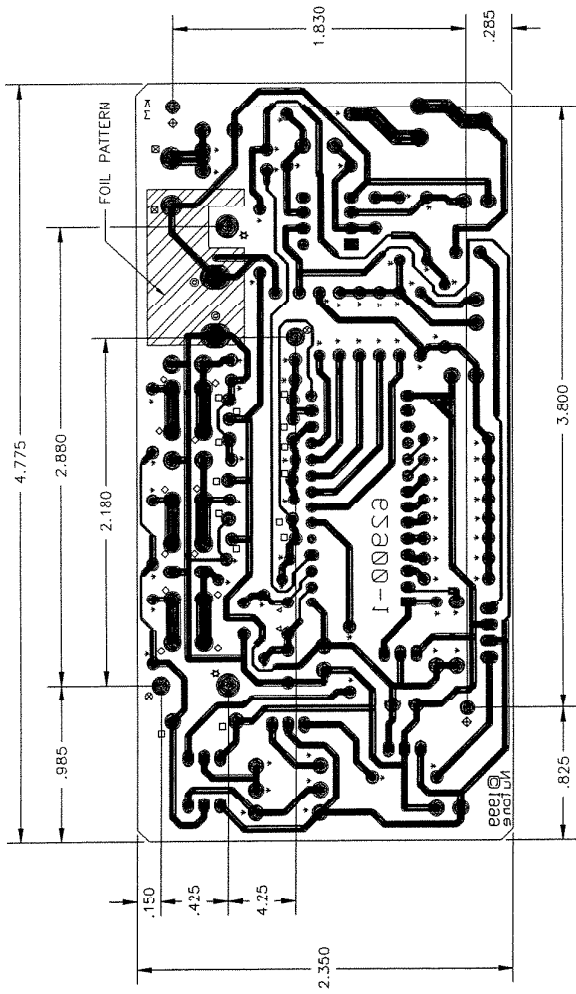


MODEL IA-29 OLD



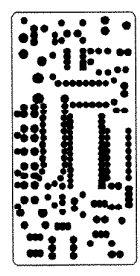
NOTE: IA29 ONLY



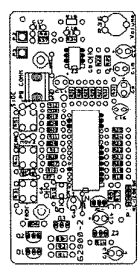
FOIL PATTERN
(SCALE 3:1)

HOLE CHART

SYMBOL	DIAMETER	QTY.	REMARKS
A	.040	14	AUTO-INSERT
B	.035	2	AUTO-INSERT
C	.074	12	A. REF. HOLES
D	.100	2	A. REF. HOLES
E	.125	2	A. REF. HOLES
F	.040	78	AUTO-INSERT
G	.040	90	AUTO-INSERT



RESIST PATTERN



COMPONENT MARKING PATTERN

- NOTES:
1. MATERIAL: 1.07 COPRUS PLUS ONE SIDE .065 THICK FR-2 OF NITONE ENGINEERING APPROVED EQUIVALENT MATERIAL.
 2. FINISH: SEAL BRATE.
 3. WARPAGE FACTOR NOT TO EXCEED .025 INCH PER INCH OF LENGTH.
 4. BOND STRENGTH: 8 POUND PER INCH WIDTH MINIMUM.
 5. ALL HOLE PATTERNS SHOWN FROM THE COMPONENT SIDE OF THE BOARD.
 6. ARTWORK FURNISHED BY THE NITONE ENGINEERING DEPARTMENT:
 - a. COMPONENT MARKING PATTERN 62800-1
 - b. COMPONENT MARKING PATTERN 62800-2
 - c. RESIST PATTERN
 7. TOLERANCE FOR ALL HOLES PATTERNS TO BE $\pm .003$ UNLESS OTHERWISE SPECIFIED.
 8. DIMENSION TOLERANCE $\pm .005$ PLUS $\pm .001$ FOR EVERY INCH OVER TWO INCHES.
 9. ALL HOLES TO HAVE $\pm .003$ DIAMETER TOLERANCE UNLESS OTHERWISE SPECIFIED.
 10. COMPONENT MARKING PATTERN TO BE SCREENED ON OPPOSITE FOIL SIDE OF THE BOARD. COLOR OF MARKING TO CONTRAST WITH BOARD COLOR.
 11. THE BOARD IS TO BE MARKED WITH U.L. #4V-0 TRACING IN CONVENIENT AREA.
 12. BOARDS TO BE MARKED WITH DATE OF MANUFACTURE.
 13. 1000 DIA. (?) ALL REG HOLES MARKED (R) MUST BE MADE DURING THE SAME OPERATION AS ALL HOLES MARKED AUTO-INSERT.
 14. GERBER PCB FILES STORED ON NITONE NETWORK NT-THREE/DEPARTMENT/PC BOARD FILES/A08 & A09